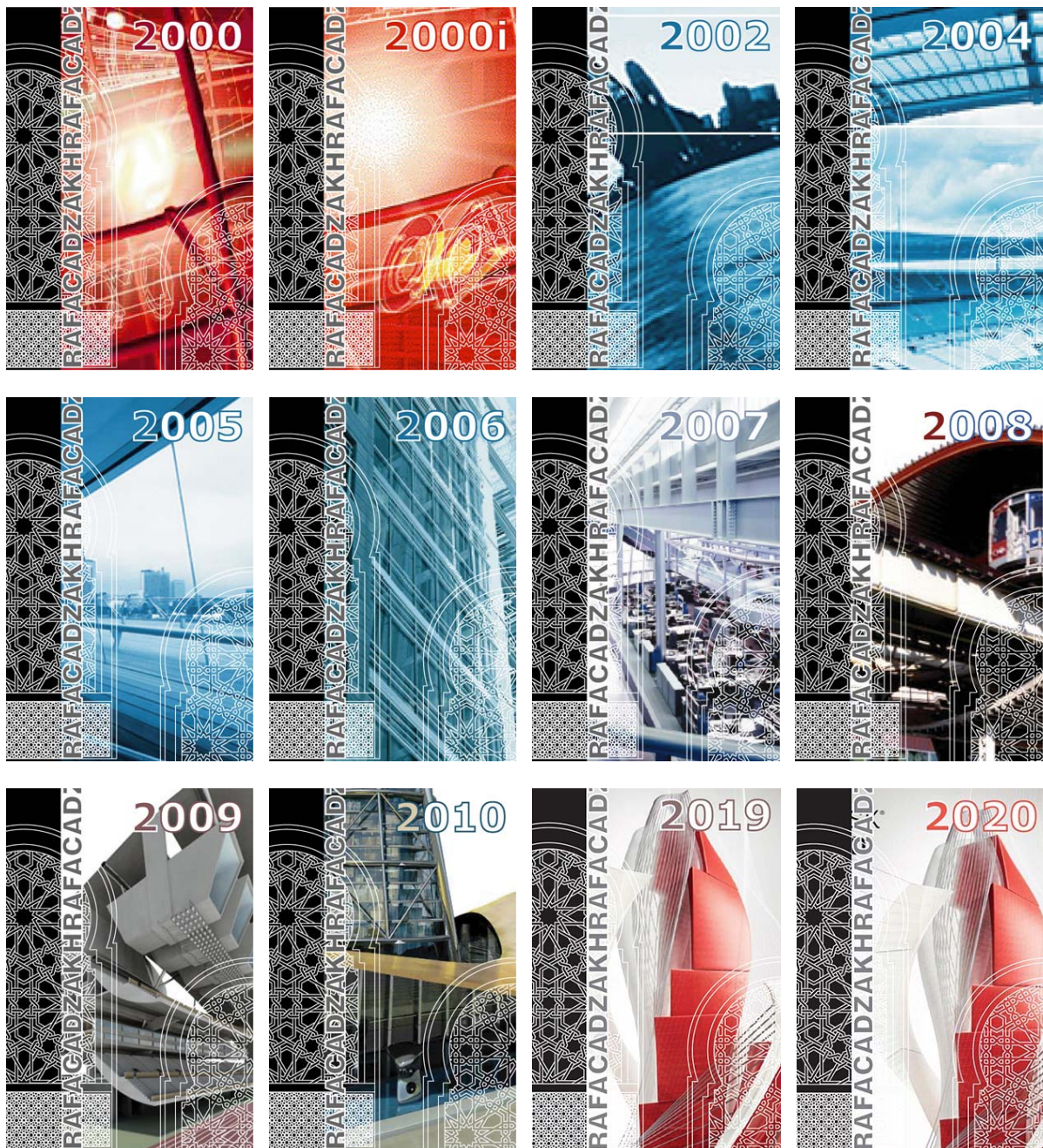


## Presentation :

ZakhrafaCAD 1.5 is a library of arabo-islamic geometric patterns. It is a easy tool of use, integrate to the menu of AutoCAD, and allows with simple clicks, to fill all way of contour with the geometric pattern of your choice. ZakhrafaCAD 1.5 is not an autonomous application, it functions under AutoCAD.

ZakhrafaCAD 1.5 exists for all versions of AutoCAD, from the 2000 version until 2009 version. It will be also available for AutoCAD Architecture (formerly Architectural Desktop) in the next months to come.





If you are architect, decorator, craftsman (woodworker, plasterer...), designer, computer graphics artist... and you have need to work with geometric patterns for projects :

- **Architecture**
- **Interior decoration : walls, ceilings, tilings...**
- **Design**
- **Advertisement**
- ...

***ZakhrafaCAD 1.5 is the application that you need.***

ZakhrafaCAD 1.5 contains 200 Simple Patterns, 200 Crossword Interlacing Patterns, and 200 Simple Interlacing Patterns, with innumerable possibilities to create other patterns of your choice.

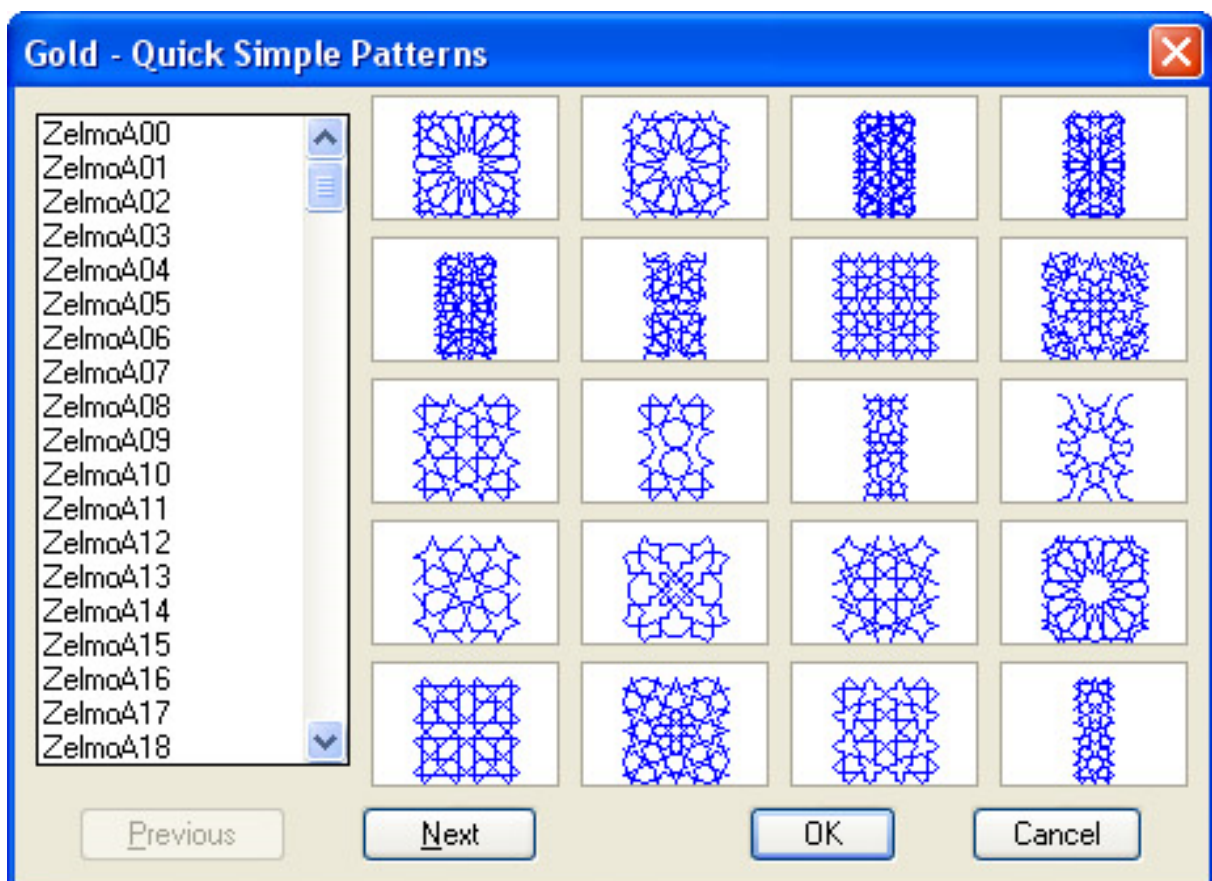
## Using ZakhrafaCAD 1.5 :

Using ZakhrafaCAD 1.5 menu offers three possibilities, of which each contains two options. The first possibility is the **Simple Patterns**, the second is the **Crossword Interlacing**, and the third is the **Simple Interlacing**. The first option is the **Quick Mode**, the second is the **Normal Mode**.

The **Quick Mode** allows to use ZakhrafaCAD 1.5 in a fast manner (2 clicks only), you only have to indicate the point of insertion of the basis pattern and the internal point while choosing a point inside the contour to fill. The contour is filled with the pattern of your choice to the scale 1:1 and with Rotation angle 0.

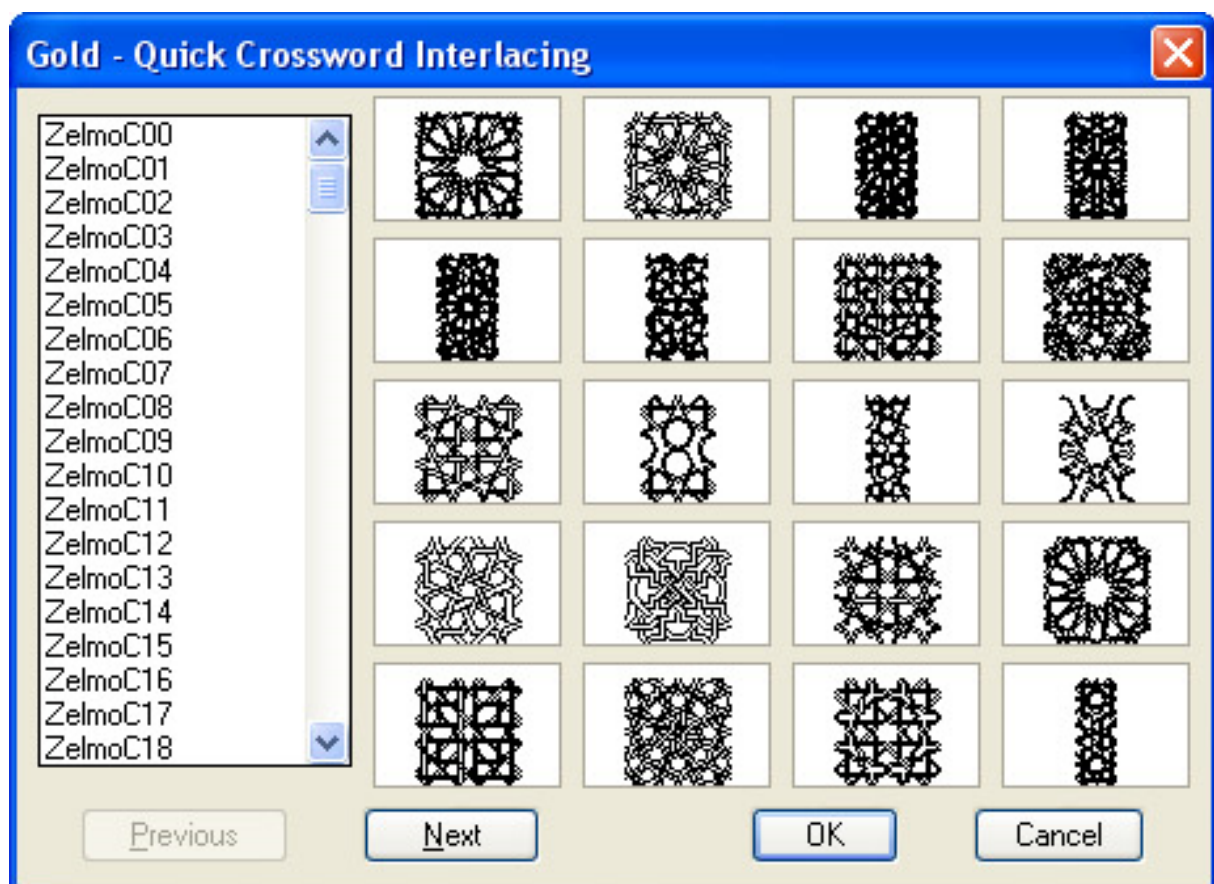
The **Normal Mode** allows to personalize the scale of the pattern, its rotation angle... etc. It offers more options and that allows to have innumerable possibilities.

The **Simple Patterns** category displays all simple patterns classified by name and by page of 20 slides. Use the Next and Previous button to browse all patterns.

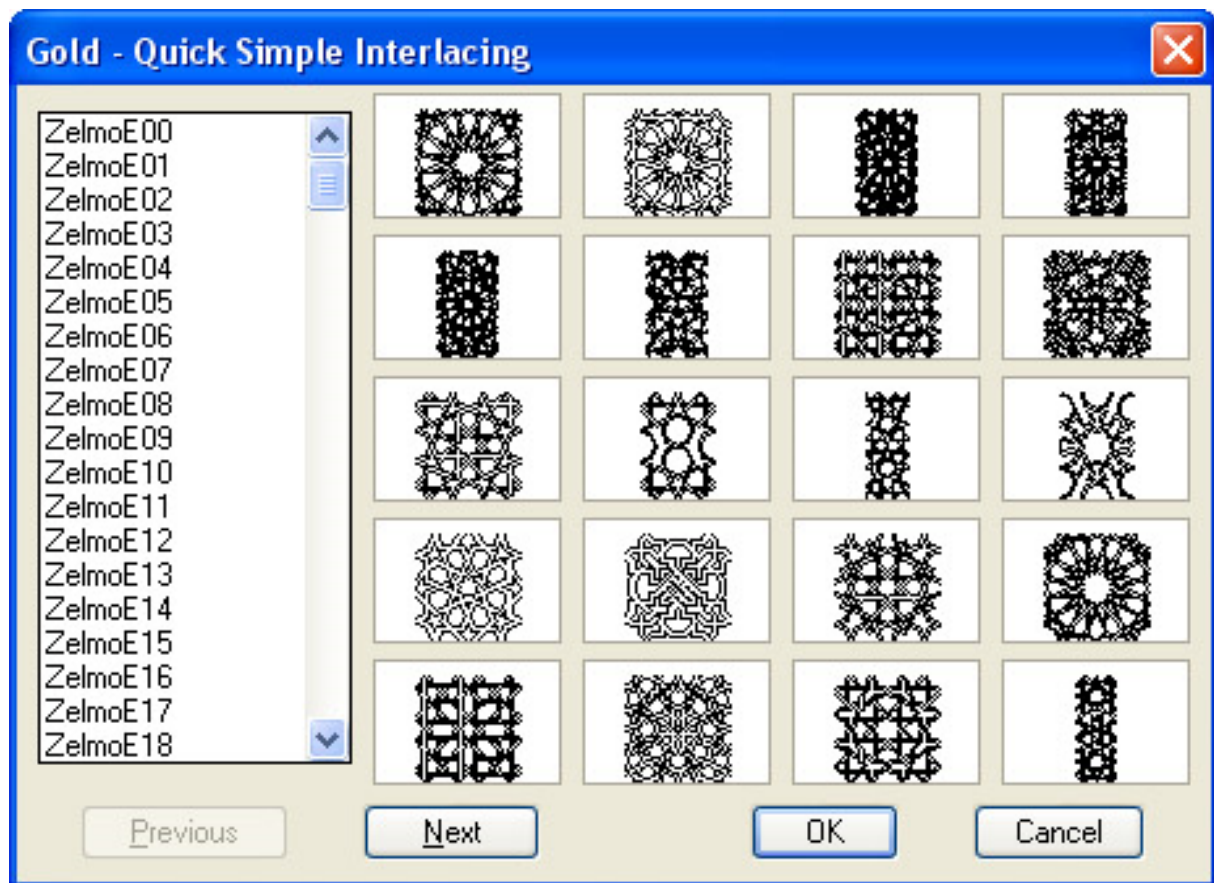


The **Crossword Interlacing** category displays the same patterns as the Simple Patterns category, but with the crossword interlacing.





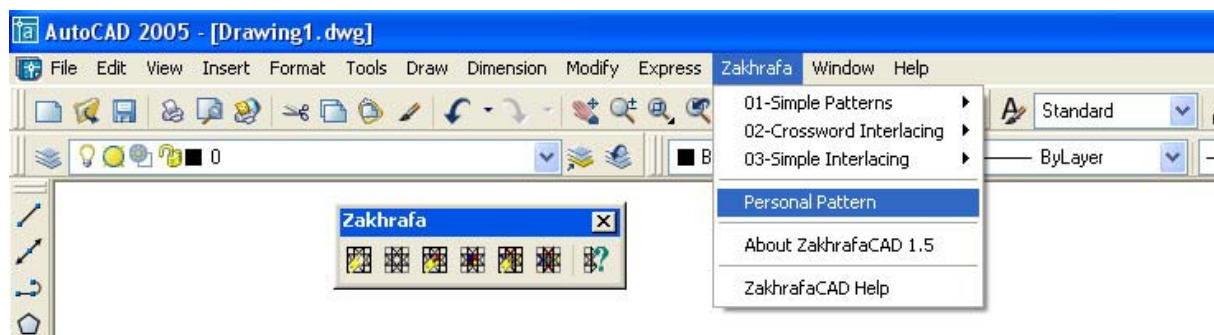
The **Simple Interlacing** category displays the same patterns as the other two categories, but with the simple interlacing.



**Note :** The total number of patterns is 600, 200 in each of three categories.

## Personal Pattern :

Zakhrafa Menu : Personal Pattern



## About Personal Pattern :

To Use the Personal pattern option, you must satisfy the following requirements :

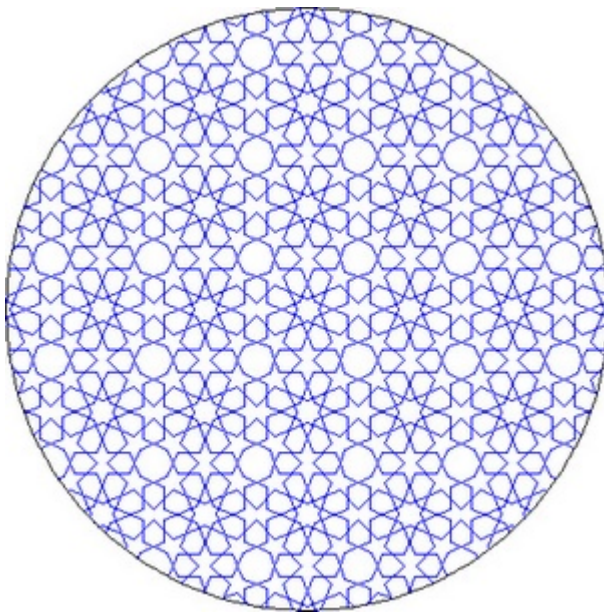
- The pattern that you use must be a basis pattern, that is to say a pattern capable to be repeated according to an rectangular frame.

- The pattern must be copied in an recognized folder as search path of support files, like "Mdwgs" folder wish is placed in ZakhrafaCAD 1.5 folder installation (by default C:\Program Files\ZakhrafaCAD 1.5\VACAD 2XXX\Mdwgs).
- The base point must be of preference situated in the center of the pattern. For more information about base point, report to AutoCAD documentation or to help.

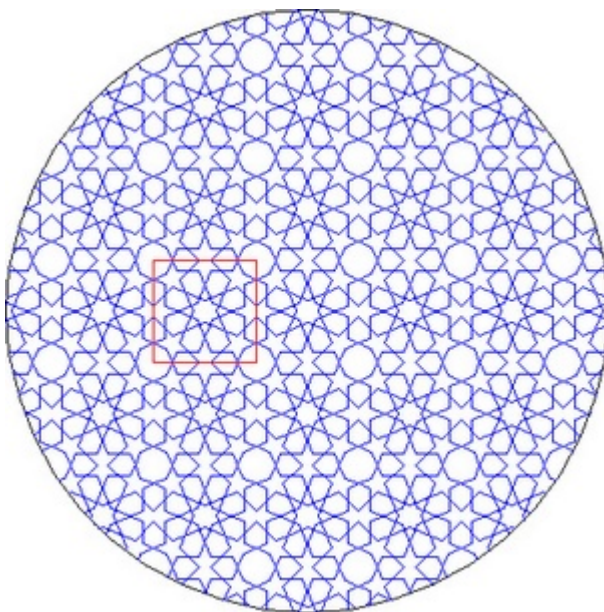
## Creation of Personal pattern :

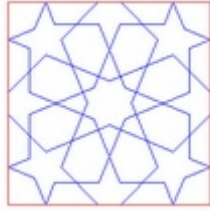
The method creation of your personal pattern passes by the following stages :

you choose a geometric pattern (ZelmoB32 for example) :

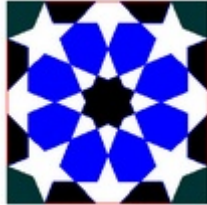


Then you isolate the basis pattern :

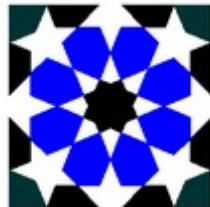




You personalize your pattern as you want, here we are going merely to color it :



You remove the setting, you change the basis point in the center of the pattern, and you save your pattern under a name of your choice. Respect the above-stated orders.



## Using Personal Pattern option :

When you start this to option from the menu, You have following command line prompt :

**Enter the Name of your personal pattern** : Enter the name of your pattern without dwg extension, for example " MotifPer\_01 " to designate " MotifPer\_01.dwg ".

Then you have the following command line prompt :

**Error tolerance for curves <0.8081759>**: Specify a value for error tolerance for curves or press on ENTER to use the one given by default.

**Specify insertion point of pattern "your pattern"** : Specify an insertion point. The position that you will indicate would be kept at the end of the command execution.

**X scale factor <1> / Corner / XYZ**: Specify the X scale factor.

**Y scale factor (default=X)**: Specify the Y scale factor.

**Rotation angle <0>**: Specify the rotation angle

**Is the placement of this BLOCK acceptable? {Yes/No} <Yes>**:

Press ENTER if the placement of the pattern is acceptable otherwise type No or merely N and press ENTER to reposition the pattern, to define its scale and its rotation angle.

**Select a window around the block to define column and row tile distances. Specify block [Extents] First corner <magenta rectang>**: Specify a frame for tiling, and press ENTER.

After the preceding steps have been completed :

Selecting visible objects for boundary detection...Done.

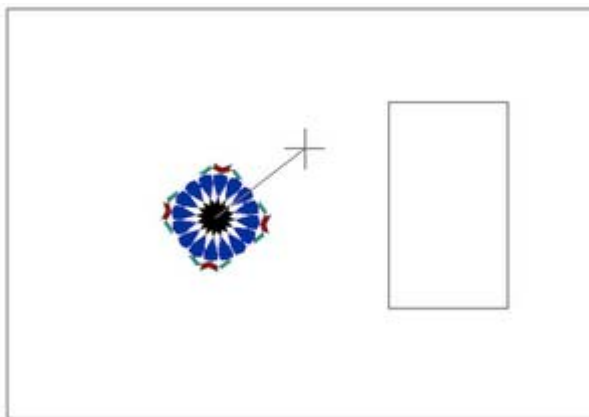
Specify an option [Advanced options] <Internal point>: Specify an internal point for hatch boundary, or enter A for advanced options, and press ENTER.

Preparing hatch objects for display...

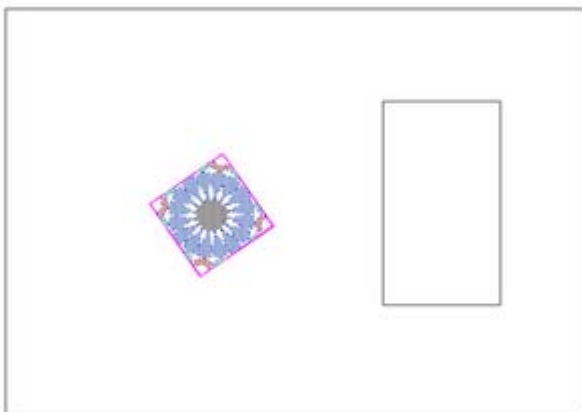
Done.

**Using Example : A variant with color of ZelmoB35 pattern .**

*Place the pattern :*

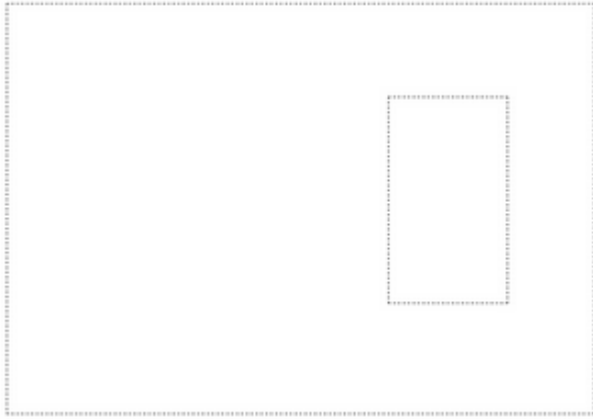


*Define a windows around the pattern :*

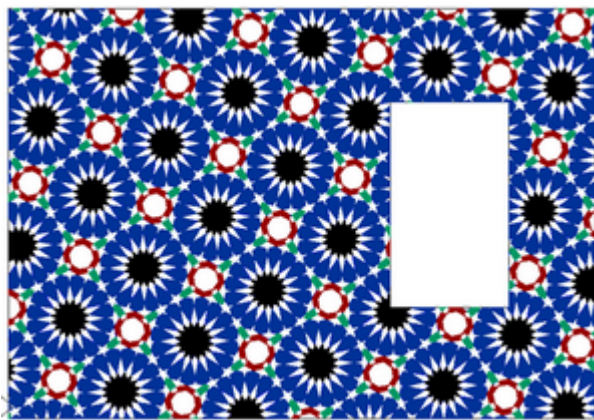


*Define a hatch boundary :*



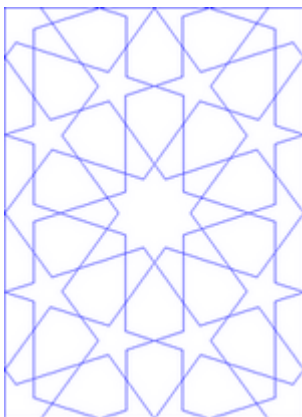


*Pattern finished :*

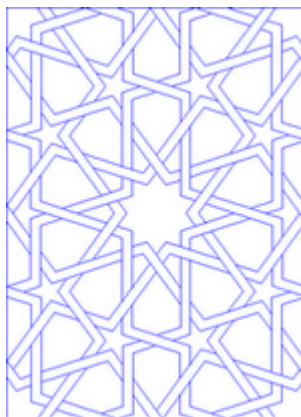


**Note :** ZakhrafaCAD 1.5 uses some specific Express tool functions and use the XCLIP command. This command has particularities. For more detail report to AutoCAD Help concerning this command.

**Other example of the Personal pattern option use :**



Motif Zelmod20



The intertwined pattern



The same pattern with color

So you can imagine the innumerable possibilities that the Personal pattern option offers. With the 360 patterns of Gold version, you can create the thousands of variants of these patterns.

## Contact :

Marabesk ®

B.P 2630 Marrakech Principal Morocco

GSM : (212) 06 11 91 13 65

Contact : [info@marabesk.com](mailto:info@marabesk.com)

Copyright © 2019 Marabesk. All rights reserved.